

*Department of
Radiology
Techniques
The Second Stage*



Leg (Tibia-Fibula)

Lecture 9

Assist. Lecturer

Tariq Nadhim Jassim

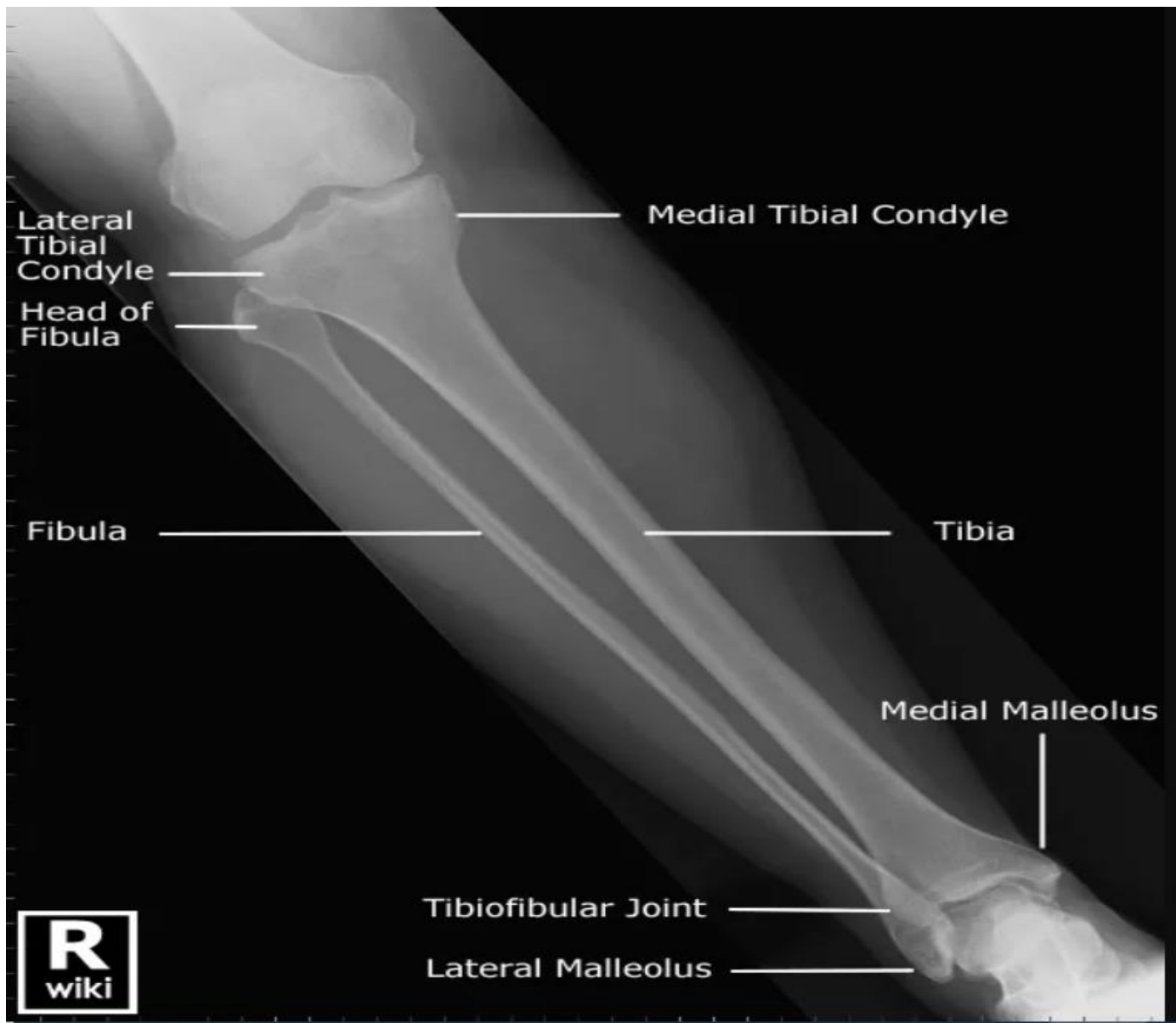
Fadhil Aad Leftah Al-zurfi

Basic Positions of Leg

1- Anterior – Posterior

2- Lateral

Cassette out – Bucky (14x17 Inch)



Lateral
Tibial
Condyle
Head of
Fibula

Medial Tibial Condyle

Fibula

Tibia

Medial Malleolus

Tibiofibular Joint

Lateral Malleolus

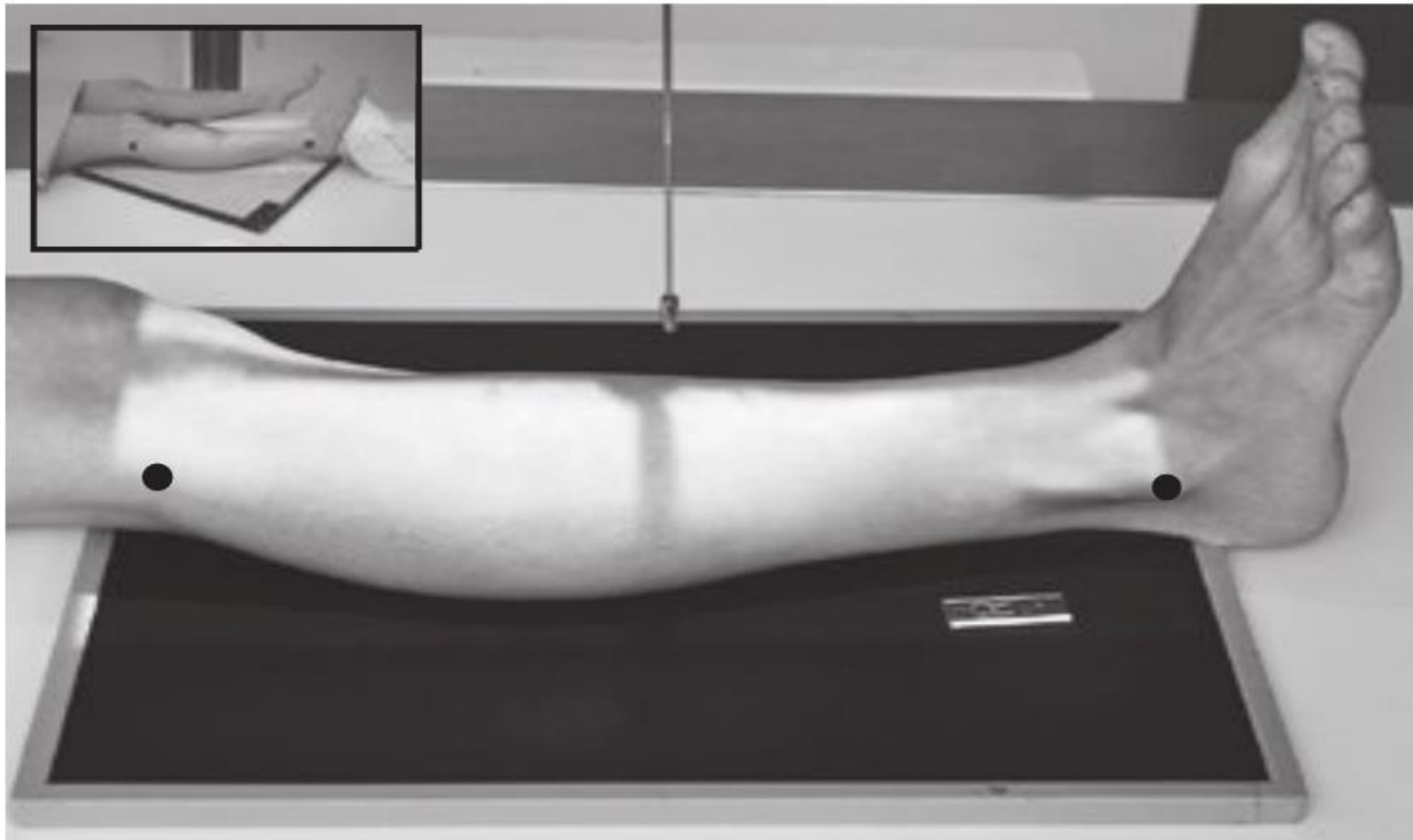
1- Anterior – Posterior

Position of Patient

- The patient is either supine or seated on the X-ray table, with both legs extended.
- The limb is rotated medially until the medial and lateral malleoli are equidistant from the cassette,, the cassette is (14x17) positioned out Bucky.

Direction and centering of the X-ray beam

- Center of x-ray to the middle shaft of the tibia.





Antero-posterior



spiral fracture of tibia



Antero-posterior radiograph showing fracture of proximal fibula and distal tibia

2- Lateral

Position of Patient

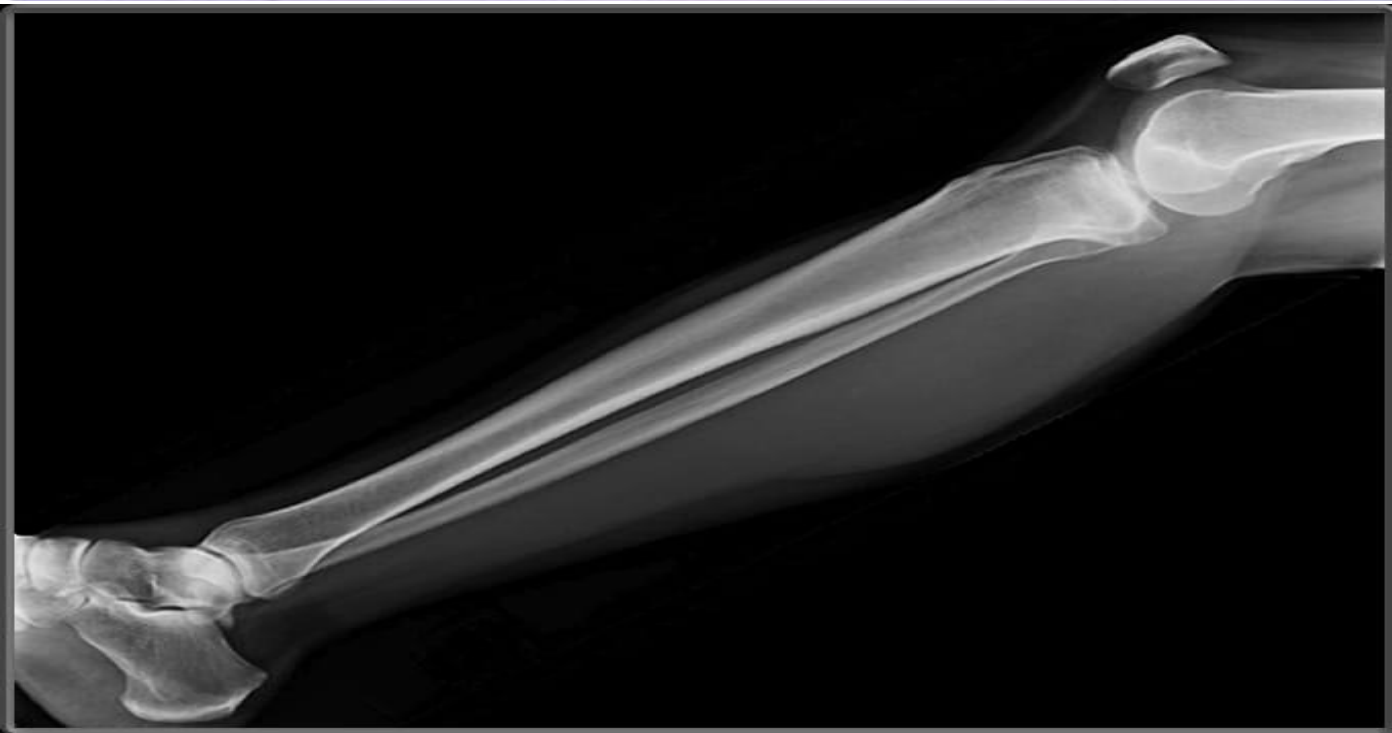
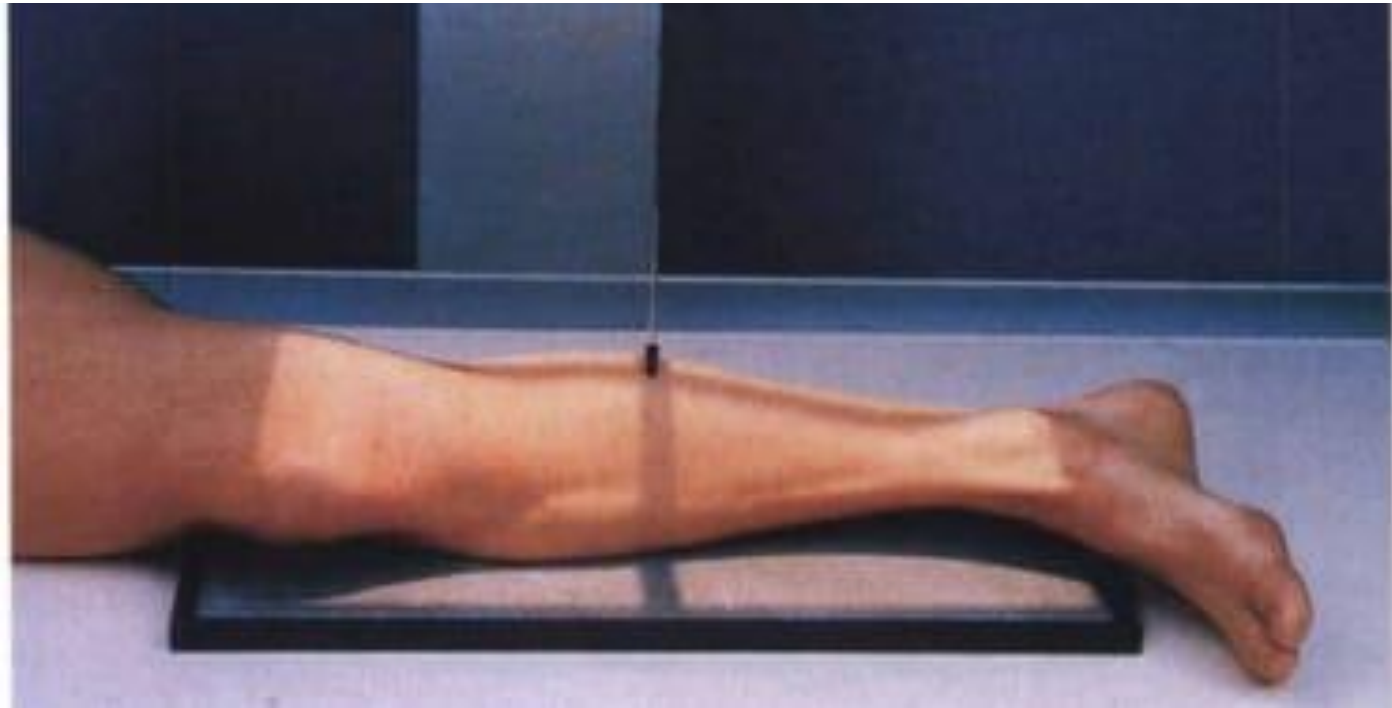
- From the supine/seated position, the patient rotates on to the affected side.
- The leg is rotated further until the malleoli are superimposed vertically.
- The tibia should be parallel to the cassette , the cassette is (14x17) positioned out Bucky.

Direction and centering of the X-ray beam

- Center of x-ray to the middle shaft of the tibia.

Image Characteristics

- The knee and ankle joints must be included, since the proximal end of fibula may also be fractured when there is a fracture of the distal fibula.



Lateral

Thanks

The word "Thanks" is written in a large, pink, cursive font with a sparkling, glitter-like texture. The text is centered and surrounded by several pink roses and green leaves on thin black stems. One rose is positioned above the letter 'h', another to the left of the 'T', and a larger one to the right of the 's'. The background is plain white.